



**BLOCK IRON**  
**& Supply Company**  
 Architectural Doors & Hardware

Main Office:

**Oshkosh Office**  
 1016 Witzel Avenue  
 Oshkosh, WI 54902  
 920-231-8645

**Madison Office**  
 3121 Syene Rd.  
 Madison, WI 53725  
 888-799-0499

**New Berlin Office**  
 16925 W. Victor Rd  
 New Berlin, WI 53151  
 262-439-2200

**Wausau Office**  
 5903 Frame Street  
 Schofield, WI 54476  
 888-799-0499

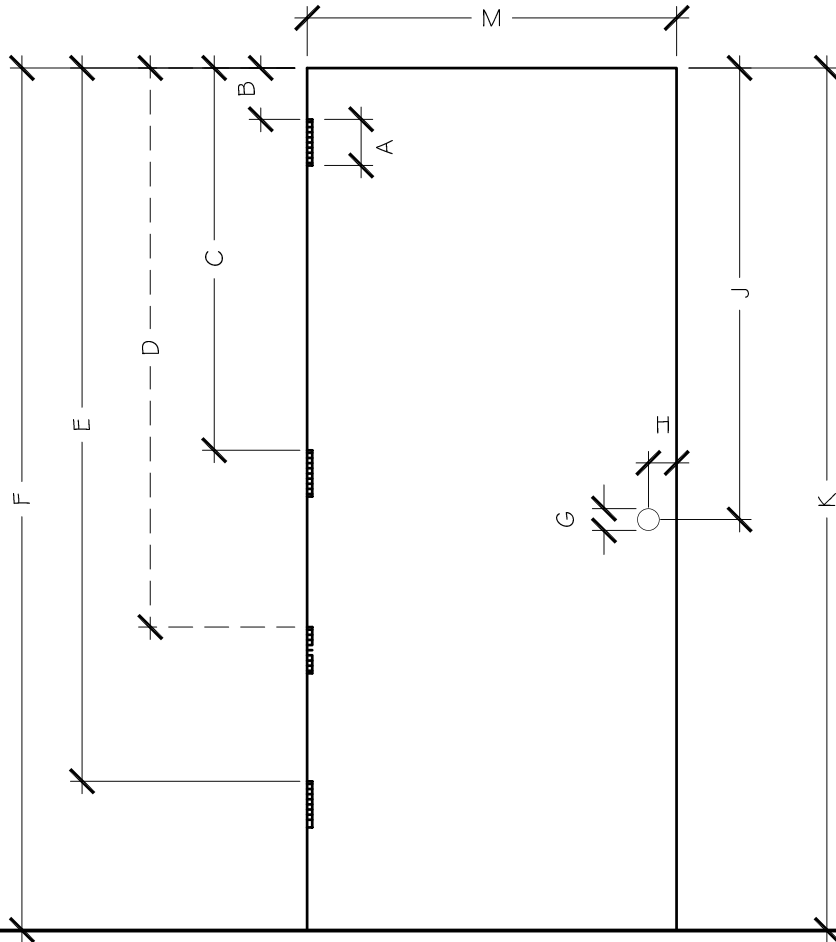
PROJECT NAME:

OPENING NUMBER:

SHEET CONTENTS:

PAGE:

EXISTING DOOR  
 LOCATIONS

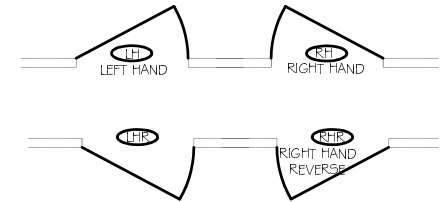


LOCATIONS:

- A- \_\_\_\_\_
- B- \_\_\_\_\_
- C- \_\_\_\_\_
- D- \_\_\_\_\_
- E- \_\_\_\_\_
- F- \_\_\_\_\_
- G- \_\_\_\_\_
- H- \_\_\_\_\_
- J- \_\_\_\_\_
- K- \_\_\_\_\_
- M- \_\_\_\_\_

If Mortise lock, contact Block Iron for function holes.

Swing of Opening:

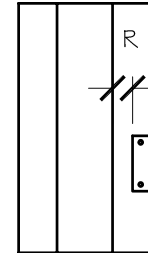


Door Thickness? \_\_\_\_\_

Lock/Strike Type,  
 Make, Series, Function  
 \_\_\_\_\_

Actual Hinge Thickness  
 \_\_\_\_\_

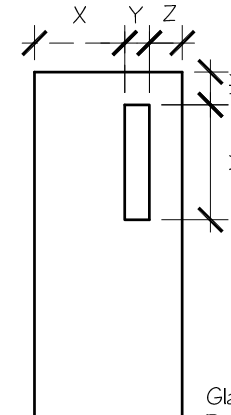
Verify Hinge Backset  
 (Dimension 'R')  
 \_\_\_\_\_



Circle One:  
 Measured to

Glass or Door Panels?  
 \_\_\_\_\_

Cut-out Visible



- V- \_\_\_\_\_
- W- \_\_\_\_\_
- X- \_\_\_\_\_
- Y- \_\_\_\_\_
- Z- \_\_\_\_\_

Glass Thickness or  
 Panel Requirements?  
 \_\_\_\_\_

Additional Notes: